

MAKING THE INVISIBLE, VISIBLE

Spectralint C2S

JUNE 25 release

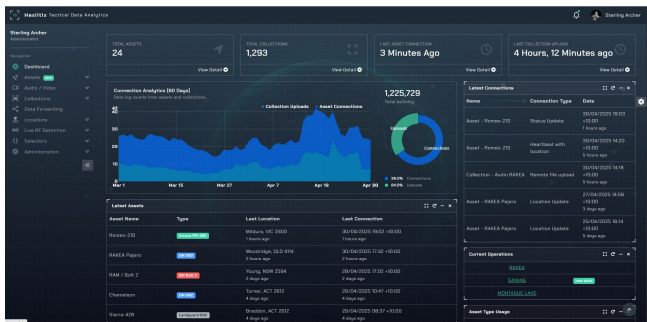
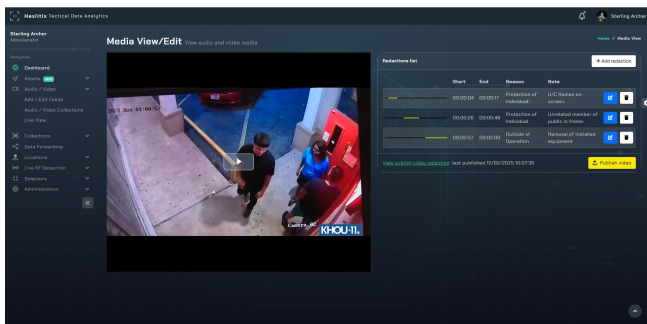
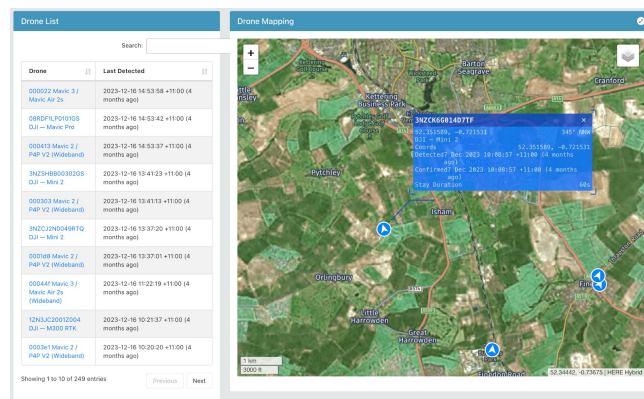
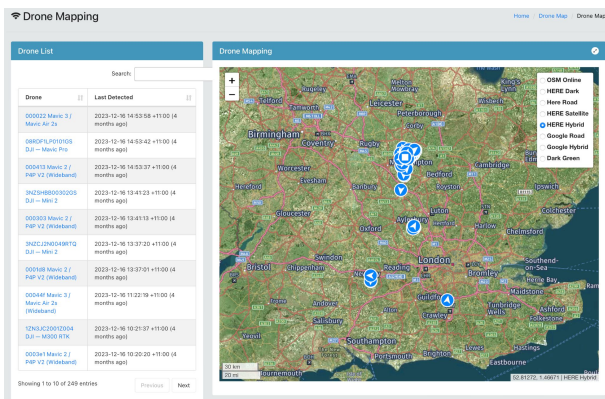
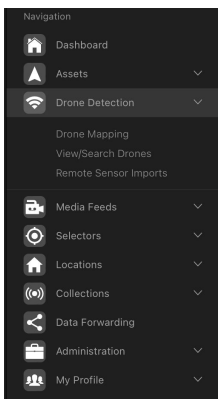
DETECT | ANALYSE | PREDICT | INFLUENCE



Spectralint C2S - SkyControl integration

Spectralint C2S's (Command, Control & Sensors) main function is to provide both HEADQUARTERS and FIELD elements with the timely intelligence data required to enhance field operations, we call this Tactical Data Analytics. We are able to deliver this through our mobile connected system and a carefully designed display which is clean and user friendly. Unlike standard COTS solutions, every screen and section of Spectralint C2 can be completely customised to the user's requirements. In addition to this, it includes a data integration service that takes data from any source or data file enabling Spectralint C2S it to be truly hardware and software agnostic. Spectralint C2 is at the heart of the Skycontrol solution set giving a common platform for drone detection command and control.

Spectralint C2S is the standard platform for SkyControl, not only is data displayed in real-time, Historical data can provide advanced analytics and patterns of life, overlaid with other data sets such as Asset trackers, IMEI/IMSI data, Cell tower and WiFi data and many other types of complex signals intelligence data.



Spectralint C2S utilises Machine Learning AI to provide an image detection service that can be applied to still imagery or real time video. Spectralint C2S separates itself from other products by being able to database results and allow the user to search through bulk data sets for only images that contain specified artefacts.

Spectralint C2S provides a number of Tactical Data Analytics tools that provide real-time results to operators in the field. These tools can coalesce data from multiple sources to provide results. These tools can be used to provide pattern of life analysis, N-link analysis to find additional targets of interest or analyse collection data to identify multiple common occurrences.



Latest Release - JUNE 25



New Features

Live Blue Force Tracking (BFT): Real-time location tracking of friendly forces with layered map visualisation and alerting.

Multi-agency Collaboration Layer: Secure data sharing across agencies with role-based access, tagging, and audit logging.

Geo-tagged Media Uploads: Field teams can capture and upload photos. Put tags against them and add other relevant data.

Enhanced Area of Interest (AOI) Tools: Persistent AOIs with smart alerts for movement, changes, and historical playback tools for video.

Integrated Drone Feed Support: Direct live-streaming from drone platforms.

Offline Mode Enhancements: Operators can fully function in disconnected environments with auto-sync when reconnected. Application for Windows. (Almost there with this).

Audio File Transcription: Uploaded audio files (e.g. interviews, intercepted comms) are now automatically transcribed and timestamped for fast review and analysis. Key word searches etc

In-house Video Management System (VMS): Custom-built VMS supports ingestion, playback, tagging, and archiving of surveillance and operational video, fully integrated into the Spectralint workflow.

Data Forwarding and Integration (e.g. DragonForce): Spectralint can forward curated operational data e.g. positional data and or tags in real-time to external platforms such as *DragonForce* or *ATAK*, enabling downstream consumption by other C2 systems or teams, with structured metadata tagging and protocol compatibility.

AI in Spectralint

AI-Powered Entity Recognition: Extracts key people, assets, vehicles, and locations from documents, chat logs, PDFs, and media.

Predictive Movement Modelling: Forecasts likely movement or behaviour of persons of interest based on pattern-of-life analysis.

Report Generation: Spectralint can generate structured reports with minimal effort by the end user directly from operational data, tagged media, and user notes, significantly reducing reporting burden on field teams.

Anomaly Detection in Sensor & Video Feeds: Detects and highlights unexpected patterns (e.g., loitering, unusual vehicle paths) in real-time or archived footage. (Full implementation Q3-2025)

Speech-to-Text Transcription with Keyword Tagging: Automatically transcribes audio with keyword highlighting and search, enabling rapid review and redaction where required.

AI Integration with Custom VMS: Smart tagging, face/vehicle recognition, and auto-event detection within stored or live video.